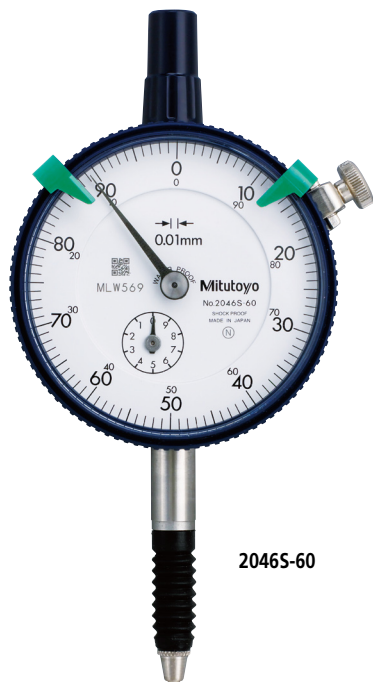


Dial Indicators

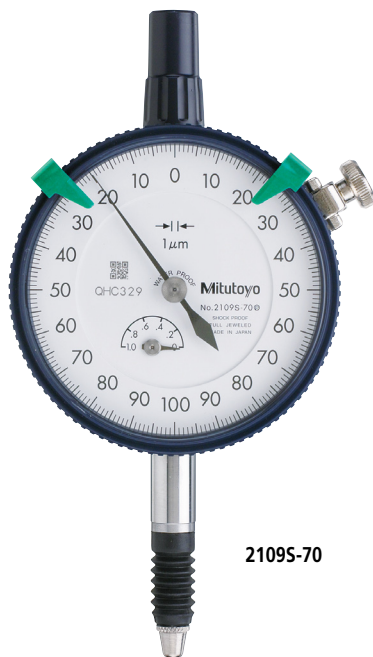
Comparison measuring instruments which ensure high quality, high accuracy and reliability.

SERIES 2 — Waterproof Type, 0.01 mm & 0.001 mm Graduation

- Waterproof type dial indicators having a bezel with an outside diameter of 57 mm. All types come with limit markers and a bezel clamp as standard.
- The bezel clamp can be attached to either the right or left side. These parts can be easily installed and removed without tools.
- The stem and spindle are made of high-strength quench-hardened stainless steel suitable for heavy-duty use.
- A carbide contact point is used.
- Application of a hard coating on the surface of the crystal makes the gage highly scratch- and chemical-resistant.



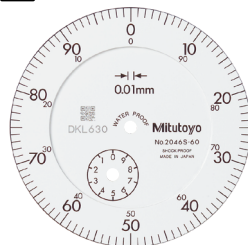
2046S-60



2109S-70



Continuous scale



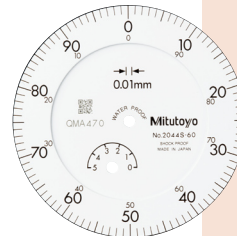
Graduation: 0.01 mm,
Measuring range: 10 mm

2046S-60

Waterproof



Continuous scale



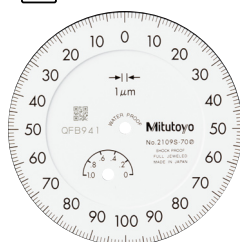
Graduation: 0.01 mm,
Measuring range: 5 mm

2044S-60

Waterproof



Balanced scale



Graduation: 0.001 mm,
Measuring range: 1 mm

2109S-70

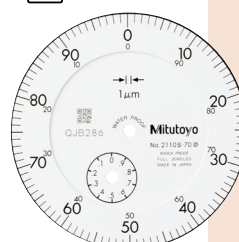
Waterproof

Shockproof

Jeweled bearing



Continuous scale



Graduation: 0.001 mm,
Measuring range: 1 mm

2110S-70

Waterproof

Double scale spacing

Shockproof

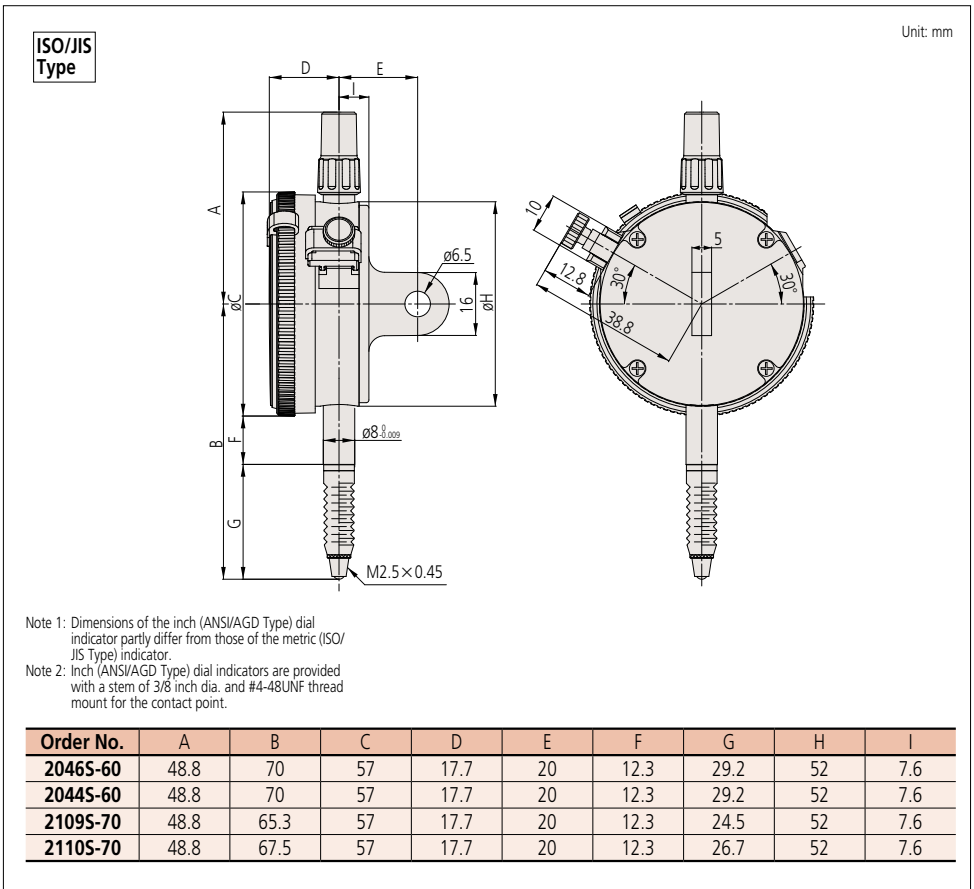
Jeweled bearing



An inspection certificate is supplied as standard. Refer to page X for details.



DIMENSIONS



FEATURES

Metric							
Order No.							
w/ lug	Flat-back						
2046S-60	2046SB-60	✓	—	—	✓	—	—
2044S-60	2044SB-60	✓	—	—	✓	—	—
2109S-70	2109SB-70	—	✓	✓	✓	✓	—
2110S-70	2110SB-70	✓	—	✓	✓	✓	✓

SPECIFICATIONS

Metric		ISO/JIS type								
Order No.		Graduation	Range (range/rev)	Accuracy*				Repeat-ability	Dial reading	Measuring force
w/ lug	Flat-back			Overall	Retrace	1/10 Rev	1 Rev			
2046S-60	2046SB-60	0.01 mm	10 mm (1 mm)	13 µm	3 µm	5 µm	10 µm	3 µm	±0-100	2.5N or less
2044S-60	2044SB-60	0.01 mm	5 mm (1 mm)	12 µm	3 µm	5 µm	10 µm	3 µm	±0-100	2.5N or less
2109S-70	2109SB-70	0.001 mm	1 mm (0.2 mm)	5 µm	2 µm	2 µm	4 µm	0.5 µm	0-100-0	2.0N or less
2110S-70	2110SB-70	0.001 mm	1 mm (0.1 mm)	5 µm	2 µm	2 µm	4 µm	0.5 µm	±0-100	2.0N or less

* Completed products inspection is performed in the vertical position (contact point downward) and the stated accuracy is guaranteed.

Dial Indicators

Comparison measuring instruments which ensure high quality, high accuracy and reliability.

SERIES 2 — Standard Type, Inch Reading

SPECIFICATIONS

Inch		ANSI/AGD type						
Order No.		Graduation	Range (range/rev)	Accuracy*		Repeat-ability	Dial reading	Measuring force
w / lug	Flat-back			First 1 Rev / 2.5 Rev / 10 Rev	Retrace			
2414S	2414SB	0.001 in	0.5 in (0.1 in)	±0.001 in / ±0.001 in / ±0.001 in	0.0002 in	±0.0002 in	±0-100	1.8 N or less
2415S	2415SB	0.001 in	0.5 in (0.1 in)	±0.001 in / ±0.001 in / ±0.001 in	0.0002 in	±0.0002 in	0-50-0	1.8 N or less
2914S	2914SB	0.001 in	0.5 in (0.1 in)	±0.001 in / ±0.001 in / ±0.001 in	0.0002 in	±0.0002 in	100-0	1.8 N or less
2506S	2506SB	0.0005 in	0.125 in (0.05 in)	±0.0005 in / ±0.0005 in / —	0.00016 in	±0.0001 in	±0-50	1.8 N or less
2507S	2507SB	0.0005 in	0.125 in (0.05 in)	±0.0005 in / ±0.0005 in / —	0.00016 in	±0.0001 in	0-25-0	1.8 N or less
2514S	2514SB	0.0005 in	0.5 in (0.05 in)	±0.0005 in / ±0.0005 in / ±0.0015 in	0.00016 in	±0.0001 in	±0-50	1.8 N or less
2922S	2922SB	0.0005 in	0.125 in (0.05 in)	±0.0005 in / ±0.0005 in / —	0.00016 in	±0.0001 in	0-25-0	1.8 N or less
2356S-10	2356SB-10	0.0001 in	0.25 in (0.01 in)	±0.0002 in / ±0.0002 in / ±0.0003 in / ±0.0004 in (First 20rev) / ±0.0005 in (Over 20rev)	0.0001 in	±0.00003 in	0-10	2.0 N or less
2358S-10	2358SB-10	0.0001 in	0.5 in (0.01 in)	±0.0002 in / ±0.0002 in / ±0.0003 in / ±0.0004 in (First 20rev) / ±0.0008 in (Over 20rev)	0.00015 in	±0.00003 in	0-10	2.0N or less
2802S-10	2802SB-10	0.0001 in	0.025 in (0.01 in)	±0.0001 in / ±0.0001 in / —	0.0001 in	±0.00003 in	0-10	2.0 N or less
2803S-10	2803SB-10	0.0001 in	0.025 in (0.01 in)	±0.0001 in / ±0.0001 in / —	0.0001 in	±0.00003 in	0-5-0	2.0 N or less
2804S-10	2804SB-10	0.0001 in	0.05 in (0.01 in)	±0.0001 in / ±0.0001 in / ±0.0002 in	0.0001 in	±0.00003 in	0-10	2.0 N or less
2805S-10	2805SB-10	0.0001 in	0.05 in (0.01 in)	±0.0001 in / ±0.0001 in / ±0.0002 in	0.0001 in	±0.00003 in	0-5-0	2.0 N or less
2905S-10	2905SB-10	0.0001 in	0.05 in (0.01 in)	±0.0001 in / ±0.0001 in / ±0.0002 in	0.0001 in	±0.00003 in	10-0	2.0 N or less
2923S-10	2923SB-10	0.0001 in	0.05 in (0.01 in)	±0.0001 in / ±0.0001 in / ±0.0002 in	0.0001 in	±0.00003 in	0-5-0	2.0 N or less

* Completed products inspection is performed in the vertical position (contact point downward) and the stated accuracy is guaranteed.



An inspection certificate is supplied as standard. Refer to page X for details.

FEATURES

Inch				
Order No.		Flat-back	Retrace	Measuring force
w / lug	Flat-back			
2414S	2414SB	—	—	—
2415S	2415SB	—	—	—
2914S	2914SB	—	✓	—
2506S	2506SB	—	—	—
2507S	2507SB	—	—	—
2514S	2514SB	—	—	—
2922S	2922SB	—	—	—
2356S-10	2356SB-10	—	—	✓
2358S-10	2358SB-10	—	—	✓
2802S-10	2802SB-10	✓	—	✓
2803S-10	2803SB-10	✓	—	✓
2804S-10	2804SB-10	✓	—	✓
2805S-10	2805SB-10	✓	—	✓
2905S-10	2905SB-10	✓	✓	✓
2923S-10	2923SB-10	✓	—	✓