

AGDH Digital manometer



Differential pressure manometer can measure 0 to 500 kPa pressure difference, suitable for ventilation and air conditioning system measurement and field calibration, clean room, or any gas pressure system fault detection, widely used. Easy to operate, clear to read, for HVAC technicians, operation and maintenance engineers and scientific researchers indispensable testing tools.

AMST-B Magnetic pole pen

Magnetic pole pen is a fast, easy and safe tool which is used to identify the polarity of magnetic field. The N / s polarity can be distinguished by the contact between the probe and the object. This instrument has the characteristics of high recognition accuracy, small and light, simple operation and exquisite workmanship. It is a highly sensitive product in China



sensitivity	±5mT (50Gs)
display	2 LED lights (red = N pole, green = S pole)
Battery	2 pcs 1.5V AAA battery
Usage time	More than 10 hours
temperature	-20℃~+80℃
Storage temperature	-40℃~+150℃
Size	About 156 × 24 × 20mm

Gauss meter



Gauss meter is a portable, multifunctional magnetic field measuring instrument equipped with high sensitivity, low drift hall sensor, and the application of advanced digital signal processing technology, suitable for measuring surface magnetic field of permanent, remanence of mechanical parts, magnetic separator or iron remover, etc. It can be used as a basic magnetic parameter measuring instrument in magnetic material manufacturers and companies, mechanical manufacturing enterprises, scientific research institute in colleges and universities.

Range	200 mT (2000Gs)	2000 mT (20000Gs)
Load division value	0.01 mT (0.1 G)	0.1 mT (1G)
Accuracy (level 1)	$\pm 1.0\%$	
Accuracy (level 2)	$\pm 2.0\%$	
Accuracy (level 5)	$\pm 2.0\%(0 \dots 1000 \text{ mT}), \pm 5.0\%(1000 \text{ mT} \dots 2400 \text{ mT})$	
Power supply	1 pcs 9 V Battery	
Working environment	$0^{\circ}\text{C} \sim 50^{\circ}\text{C}, 20 \sim 85\% \text{R} \cdot \text{H}$, No condensation	
Storage environment	$-20^{\circ}\text{C} \sim 70^{\circ}\text{C}, 85\% \text{R} \cdot \text{H}$, No condensation	
Instrument dimensions	160 mm×75 mm×34 mm	
Weight of instrument	About 260g (including batteries and conductors)	
Hall probe	Standard radial Hall probe, wire length about 1 meter	

ANC torque adapter (torque gauge)

ALIYIQI[®]
Instrument



ALIYIQI[®]
Instrument



(ANC)



(ANT set)

Digital torque gauge is a torque monitoring instrument equipped with a ratchet wrench, which is used for various tightening and disassembly control strengths. Suitable for automotive, bicycle, various machinery maintenance and other industries.

Model	30	135	200
Min.division value	0.01N.m	0.1N.m	0.1N.m
Max.operating range	3-30N.m	13.5-135N. m	20-200N.m
Adaptor size	1/2		
Torque accuracy	$\pm 2\%$ by clockwise, $\pm 2.5\%$ by counterclockwise		

AWJ Digital torque wrench



Model	010	030	030	060	085	135	135	200	340	500	850
Min.scale value	0.01					0.1					
Max. operating range (N.m)	10N.	30N.	30N.	60N.	85N.	135N.	135N.	200N.	340N.	500N.	850N.
	m/7.3	m/22.	m/22.	m/44.	m/62.	m/99.	m/99.	m/147	m/250	m/442	m/752
	7ft.lb/	12ft.lb	12ft.lb	25ft.lb	69ft.lb	57ft.lb	57ft.lb	.5ft.lb/	m/250	4in.lb/	1in.lb/
	88.50i	/265.5	/265.5	/531.0	/752.3	/1195i	/1195i	1770i	ft.lb/3	368.7f	626.8f
	n.lb/1	in.lb/3	in.lb/3	4in.lb/	1in.lb/	n.lb/1	n.lb/1	n.lb/2	009in.	t.lb/50	t.ln/86
	01.97	05.91	05.91	611.8	866.7	376.6	376.6	039.4	lb/346	98.58	67.58
	kgf.c	kgf.c	kgf.c	2kgf.c	5kgf.c	1kgf.c	1kgf.c	3kgf.c	7.03k	kgf.c	kgf.c
	m	m	m	m	m	m	m	m	gf.cm	m	m
	Connectors (inches)	1/4		3/8			1/2			3/4	
	Setting range of buzzer (N.m)	0.5~1 0	1.5~3 0	1.5~3 0	3~60	4.25~ 85	6.75~ 135	6.75~ 135	10~ 200	17~34 0	25~50 0
Length	390		420			535			655	950	1220
Accuracy*1	Clockwise: ±2% Counterclockwise:±2.5%					Clockwise: ±2.5% Counterclockwise:±3.5%					
Storage capacity of materials	100										
Operating mode	Peak hold (P)/real time mode (T)										
Unit	N.m、in.lb、ft.lb、kgf.cm										
Type of ratchet head	Two-way ratchet head										
Teeth number of ratchet head	36									48	
Storage capacity of materials	100 Set		Number of key		5		Type of ratchet head		Two-way ratchet head		
Operating mode	Peak hold (P)/real time mode (T)		Battery		2 sets of 1.5V#5 battery		Life test*3		10000times		

AWM Mini Digital Torque Wrench

ALIYI®



ALIYI®



Model (with no communication)	10	30	60	100
Minimum division value	0.01			0.1
Maximum operating range (N.m)	10N.m/7.37ft.lb/88.50in.lb/101.97kgf.cm	30N.m/22.12ft.lb/265.5in.lb/305.91kgf.cm	60N.m/44.25ft.lb/531.04in.lb/611.82kgf.cm	100N.m/73.7ft.lb/885.0in.lb/1019.7kgf.cm
Connector (inches)	1/4		3/8	1/2
Setting range of buzzer (N.m)	0.3~10	0.9~30	1.8~60	3~100
Length (mm)	230		240	285
Accuracy*1	Clockwise: ±2% Counterclockwise: ±2.5%			
Data storage capacity	999			
Operating mode	Peak mode (P) / Real-time mode (T) / Preset mode (Pre)			
Unit	N.m, kgf.cm, lbf.tf, lbf.in			
Form of ratchet head	Bidirectional ratchet head			
Number of ratchet teeth	72 teeth			
Number of keys	5			
Battery	Two AAA batteries			
Operating temperature	-10℃ to 60℃			
Storage temperature	-20℃ to 70℃			

AWG Digital torque wrench with communication function

AWE Digital Angel Torque Wrench (with angel)



ALIYIQI
instrument



AYB preset torque wrench

TG preset torque wrench

ALIYIQI
instrument



AYF open-end torque wrench

AWJC interchangeable digital torque wrench



AYT-18 (2-20N.m)

Bicycle maintenance wrench set

18
piece set



The internal spanner is 1 / 4; 20-210; the hexagon head is 2 / 2.5/3/4/5/6/8;
Plum head: T10 / T15 / T20 / T25 / T30; crosshead: PH1 / PH2
Extended hexagon head: cr-v5; universal joint; one extension rod

ANJ digital torque wrench calibration/tester



(ANJ-500)

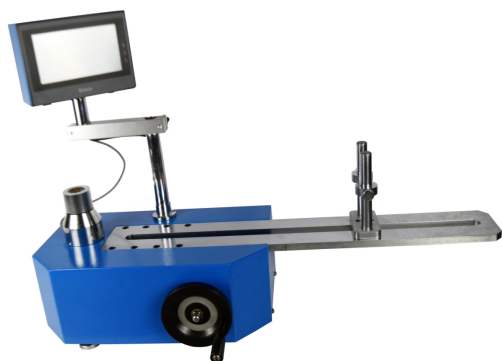


(ANJ-1000-2000)

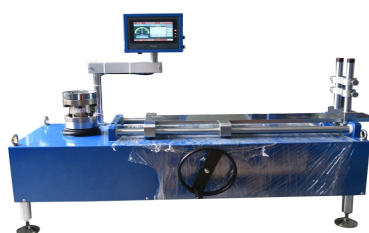
Technical parameters:

Type		ANJ- 50	ANJ- 100	ANJ- 200	ANJ- 300	ANJ- 500	ANJ- 1000
Index							
Measuring range / Division value	N·m	50.000/0.001	100.00/0.01	200.00/0.01	300.00/0.01	500.00/0.01	1000.0/0.1
	Kg·cm	510.52/0.01	1021.0/0.1	2042.0/0.1	3063.1/0.1	5105.2/0.1	10210/1
	Lb·in	443.11/0.01	886.2/0.1	1772.4/0.1	2658.6/0.1	4431.1/0.1	88622/1
Product Size		700mm×320mm×240mm					1120mm×450mm×230mm
Packing Size		110*47*35cm					130*60*35cm
The testing length range		150mm~620mm					150mm~820mm
Width stroke		130mm					200mm
Height stroke		80mm					
Precision		±1%					
Peak Value Sampling Frequency		2000HZ					
Power		7.2V 1.2VX6 Ni-MH Battery group					
Charging Time		4~6 Hours					
Continuous using time of battery		About 10 Hours					
Battery life		≥300 times					
Net Weight		40KG					78kg
Gross Weight		52kg					150kg
Power adapter		Input: AC 100-240V 50-60HZ Output: DC 10V 300mA					

ANJ-M Digital Torque Wrench Tester



(ANJ-500)



(ANJ-1000)

ANJ-M Digital Torque Wrench Tester is an intelligent multi-functional measuring instrument which is designed for testing torque wrench, torque screwdriver. It main used in testing and calibrating various kinds of Concentration type torque wrench, digital type torque wrench, preset type torque wrench, torsion screwdriver, screwdriver and all kinds of products involving tighten force instrument. Widely used in electrical manufacturing, mechanical manufacturing, automotive light industry and in scientific research and testing industry.

Function and characteristics

- Three units can be switched each other (N·m, kgf·cm ,Lb·in)
- Real-time, peak, automatic peak three models of optional switch.
- Can large storage by USB flash disk.

Model		ANJ-M100	ANJ-M200	ANJ-M300	ANJ-M500	ANJ-M1000	ANJ-M2000	ANJ-M3000
Index								
Measuring range/Division value	N·m	100.0/0.01	200.00/0.01	300.00/0.01	500.00/0.01	1000.0/0.1	2000/0.1	3000/0.1
	Kg·cm	1021.0/0.1	2042.0/0.1	3063.1/0.1	5105.2/0.1	10210/1	20420/1	30631/1
	lb·in	886.2/0.1	1772.4/0.1	2658.6/0.1	4431.1/0.1	8862/1	17724/1	26586/1
Length range		130mm～750mm				250mm～980mm	250mm～1800mm	
Angle of rotation		0～60°				0～360°		
Height stroke		130mm				150mm		
Accuracy		±1%						
Peak sampling frequency		2000HZ						
Power		AC110-240V/50Hz-60Hz						
Net weight		65Kg				335kg		

ANBH torque wrench tester



Product summary:

ANBH torque wrench tester is a special instrument for checking the torque wrench and torque screwdriver. It is mainly used for checking and calibrating the torque wrench, preset torque wrench, analog torque wrench. Widely used in electrical manufacturing, machinery manufacturing, automotive light industry, professional scientific research and testing industry. The torque value shows on digital display, more accurate and intuitive.

Technical parameters:

Model	ANBH-20	ANBH-50	ANBH-100	ANBH-200	ANBH-500
Max.	20N.m	50N.m	100N.m	200N.m	500N.m
Min. resolution	0.001	0.001	0.001	0.01	0.01
Accuracy	$\pm 1\%$				
unit	N.m、Kgf.cm、Lbf.in				
Power	Input: AC 110V- 240v Output: DC 12V				
Dimension	299*299*242mm			772*400*276mm	1142*553*360mm
Working temperature	5℃~35℃				
Transport temperature	-10℃~60℃				
Relative humidity	15%~80%RH				
Working environment	No seismic source and corrosive media around				
Weight (Kg)	12kg			27kg	43kg

ANSJ Mini Portable Torque Tester



Description:

The instrument is a quality control equipment ,it can used for calibrating the torque load cell and testing the tighten force of nut and other fasteners.It is easy operation ,high accuracy and easy to carry .It is widely used for various electrical ,light industry,machinery manufacturing,scientific research and other industries.

Technical parameter:

Model	ANSJ-5	ANSJ-50	ANSJ-220	ANSJ-550	ANSJ-2200
Range (N.m)	0.500~5.00	5.00~50.00	22.0~220.0	55.0~550.0	220~2200
Accuracy	$\pm 1\%$				
Data storage	2000				
Drive	1/4	3/8	1/2	3/4	1
Output	USB				
Operation Mode	Peak Mode (PEAK) /Real Time Mode/Max. Peak Mode				
Unit	N.m、lbf.in、kgf.cm				
Working temperature	5℃~40℃				
Storage temperature	-20℃~70℃				
Power	7.2V Ni-Mh battery				
Weight (Kg)	0.7kg	1.4kg	1.48kg	4.7kg	5.0kg

ANL DIGITAL TORQUE METER

Introduction:

Digital torque meter is an intelligent multi-functional measuring instrument which is designed for testing various kinds of torque. It main used in testing and calibrating various kinds of electric pneumatic screwdriver set, the torque of torque wrench, all kinds of products refer to testing of screw down force, parts torsion destructive testing etc. With features of simple operation, high precision, easy to carry, complete functions etc. It's widely used in various kinds of electric, light industry, machinery manufacturing, research institutions, etc.

Note: It can only test speed around 900rpm.

Model	ANL-5 00A	AN L-1	AN L-2	AN L-3	ANL -5	ANL -10	ANL- 20	ANL -50	ANL- 100	ANL -200	ANL -300	ANL- 500	ANL- 1000	ANL- 2000	ANL- 3000	ANL-5 000
Max. Load	500m N.m	1N. m	2N. m	3N. m	5N. m	10N .m	20N. m	50N. m	100N .m	200 N.m	300 N.m	500N .m	1000 N.m	2000 N.m	3000 N.m	5000N .m
	5105.2 kgf.cm	10.2 1kg f.c m	510 5.2 kgf. cm	510 5.2 kgf. cm	510 5.2k gf.c m	510 5.2k gf.c m	5105. 2kgf. cm	5105 .2kg f.cm	5105. 2kgf. cm	5105 .2kgf .cm	5105 .2kgf .cm	5105. 2kgf. cm	5105. 2kgf.c m	5105. 2kgf.c m	5105. 2kgf. cm	5105.2 kgf.cm
	4431.1 mlbf.in	8.86 2lbf .in	443 1.1 mlb f.in	443 1.1 mlb f.in	443 1.1 mlbf .in	443 1.1 mlbf .in	4431. 1mlb f.in	4431 .1ml bf.in	4431. 1mlb f.in	4431 .1ml bf.in	4431 .1ml bf.in	4431. 1mlb f.in	4431. 1mlbf .in	4431. 1mlbf .in	4431. 1mlb f.in	4431.1 mlbf.in
Division value	0.01N. m	0.00 01N .m	0.0 001 N. m	0.0 001 N. m	0.00 01N .m	0.00 1N. m	0.001 N.m	0.00 1N. m	0.01 N.m	0.01 N.m	0.01 N.m	0.01 N.m	0.1N. m	0.1N. m	0.1N. m	0.1N. m
	0.1kgf. cm	0.00 1kg f.c m	0.0 01k gf.c m	0.0 01k gf.c m	0.00 1kgf .cm	0.00 1kgf .cm	0.001 kgf.c m	0.01 kgf.c m	0.1kg f.cm	0.1k gf.c m	0.1k gf.c m	0.1kg f.cm	1kgf.c m	1kgf.c m	1kgf. cm	1kgf.c m
	0.1mlb f.in	0.00 1ml bf.i n	0.0 01 mlb f.in	0.0 01 mlb f.in	0.00 1ml bf.in	0.00 1ml bf.in	0.01 mlbf. in	0.01 mlbf .in	0.1m lbf.in	0.1m lbf.i n	0.1m lbf.i n	0.1m lbf.in	1mlbf .in	1mlbf .in	1mlb f.in	1mlbf.i n
Sensor	Inner sensor						Sensor external					Sensor external				
Accuracy	±1%															
Power	7.2V 1.2VX6 Ni-MH Battery group															
Charging Time	4~6 Hours															
Continuou s using time of battery	About 10 Hours															
Battery	≥300 times															

life			
Net weight	About 4.5kg	About 40 kg	About 13 kg



ANL-500A-20 (without printer)



ANL-500AP-20P (with printer)



ANL-50-500 (without printer)



ANL-50P-500P (with printer)



ANL-1000-5000 (without printer)



ANL-1000P-5000P (without printer)



ANL-B Economic torque tester



(Note:ANL-B only test speed around 650rpm.)

Main features

- 1 Accuracy $\pm 1\%$
- 2 Four Units: N.m、kgf.cm, ft.lbf, in.lbf
- 3 Three Test modes: Peak, 1 Peak and Real Time modes.
- 4 USB interface and PC communications,using Modbus communication data format.
- 5 Without automatic shutdown function, time can be set freely.
- 6 Warning buzzer and LED lamp.
- 7 The preset target function: can be preset target and the target tolerance range.

ANL-P Bottle Cap torque tester

Digital bottle cap torque meter is an intelligent multi-functional measuring instrument which is designed for testing various kinds of bottle cap torque. It is mainly used in testing and calibrating tighten force, parts torsional destructive testing, etc. With features of simple operation, high precision, easy to carry, complete functions etc. It's widely used in various kinds of electric, light industry, machinery manufacturing, research institutions, etc.



● Specifications

Type Index	With printer	ANL-P1	ANL-P2	ANL-P3	ANL-P5	ANL-P10	ANL-P20
	No printer	ANL-WP1	ANL-WP2	ANL-WP3	ANL-WP5	ANL-WP10	ANL-WP20
Measuring range / Division value	N·m	1.0000/0.0001	2.0000/0.0001	3.0000/0.0001	5.0000/0.001	10.000/0.001	20.000/0.001
	Kg·cm	10.200/0.001	20.400/0.001	30.600/0.001	51.000/0.01	102.00/0.01	204.00/0.01
	Lb·in	8.850/0.001	17.700/0.001	26.550/0.001	44.250/0.01	88.50/0.01	177.00/0.01
Precision		$\pm 1\%$					
Peak Value Sampling Frequency		2000HZ					
Power		7.2V 1.2VX6 Ni-MH Battery group					
Charging Time		4~6 Hours					
Battery life		≥ 300 times					
Net Weight		15KG					
Gross Weight		22kg					
Power adapter		Input: AC 110V-240V 50-60HZ Output: DC 10V 300mA					

ANPM Automatic bottle cap torque tester



Torque range (N.m)		1N	2N	3N	5N	10N
Maximum test range/minimum index value	N·m	1.000/0.001	2.000/0.001	3.000/0.001	5.000/0.001	10.00/0.01
	Kgf·cm	10.20/0.01	20.40/0.01	30.60/0.01	51.00/0.01	102.0/0.1
	Lbf·in	8.85/0.01	17.70/0.01	26.55/0.01	44.25/0.01	88.5/0.1
Measurement accuracy		±1%				
Angular Precision		1°/ 100°				
Clamping range		18mm-146mm (Small clamp 6mm-60mm)				
Automatic tightening speed		3-90deg/s (Adjustable)				
Operating temperature		0℃~35℃				
Storage temperature		-20℃~70℃				
humidity		No condensation up to 80%				
boundary dimension		440*255*1050mm				
Net weight		About 32kg				
Power supply		AC 220V 50Hz or AC 110V				

AYQ LTK PRESET TORQUE DRIVER



Type	LTDK-1.5	LTDK-3	AYQ-0.6	AYQ-1.2	AYQ-3	AYQ-6
Torque range	0.1-1.5 (Kgf.cm)	0.2-1-3.0 (Kgf.cm)	0.1~0.6 (N.m)	0.2~1.2 (N.m)	0.5~3 (N.m)	1~6(N.m)
Division value(N.m)	0.01(Kgf.cm)	0.02(Kgf.cm)	0.01(N.m)	0.02(N.m)	0.05(N.m)	0.1(N.m)
Precision	±5%					
Full size(mm)	99mm		161mm		186mm	
Handle diameter(mm)	Φ17mm		Φ26mm		Φ31mm	
Net weight	About 0.1kg		About 0.3kg		About 0.4kg	
Connection size	-----		6.35mm			

ANS Torque driver set

ALYIQ[®]



ANS-R Torque driver set



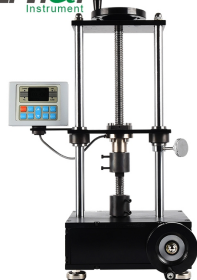
(ANS-R) screen is more bigger

ANC Torque Gauge



(ANC-200Nm)

AYQJ Torque Screwdriver Tester



◆ Usage

Torque screwdriver tester is a intelligent multi-function measuring instrument which is specialized in testing and checking all kinds of torque screwdriver. It is mainly used for testing and adjusting all kinds of torque screwdrivers, all products involving tests of tightening force, parts torsion destructive force tests, etc. It has characteristic of easy operation, high precision, full function and so on. It is widely used in various electrical, light industry, machinery manufacturing, scientific research and other industries.

◆ Characteristic

1. Three units can be switched into each other for optional (N·m, kgf·cm, lbf·in)
2. Three modes :Real-time, Peak, Auto-peak can be switched.
3. The USB interface can be connected to PC to make synchronous tests to show force diagram, and also can record and store the result.

◆ Technical Specifications

Model		AYQJ-2	AYQJ-5	AYQJ-10	AYQJ-20
Measuring range/ division value	N.m	2.000/0.001	5.000/0.001	10.00/0.01	20.00/0.01
	Kg.cm	20.40/0.01	51.00/0.01	102.0/0.1	204.0/0.1
	lb.in	17.70/0.01	44.25/0.01	88.5/0.1	177.0/0.1
Precision		±1%			
Peak Sampling Frequency		1920HZ			
Power		7.2V 1.2V×6 Ni-MH Battery			
Charging Time		4~6 hours			
Battery Continuous Using Time		About 10 hours			
Battery life		≥ 300 times			
Size		260*300*620mm			
Net Weight		32KG			
Charger		Input: AC 100-240V 50-60HZ Output: DC 12V 1000mA			

AJL Water Leak Detector



Water Leak Detector is a special instrument for searching and confirming the location of water pipe leak. It can also be used for other pressure pipe system. When the liquid in pipe overflows under pressure, noise can propagate along the pipe or spread to the ground through buried media, our instrument can confirm the location of leaks along the pipeline or above the ground surface.

Water Leak Detector uses low-power microprocessor and advanced special filter for digital processing of noise. The instrument picks up the noise and transforms it into electric signal through special designed broadband high sensitivity vibration sensor (Vibration pickup), after amplification and digital filtering processing, display on the LCD screen with two display.

Model	2000	3000
Frequency analysis bandwidth	70~3000Hz, nearly 5 octave, two kinds of bandwidth	70~4000Hz, nearly 5 octave, two kinds of bandwidth
Frequency division (Center frequency)	a、100 Hz ;b: 200 Hz;c: 400 Hz;d: 800 Hz;e: 1K Hz;f: 1.5K Hz;g: 2K Hz	a、100 Hz;b: 200 Hz;c: 400 Hz;d: 800 Hz;e: 1K Hz;f: 1.5K Hz;g: 3K Hz
Bandwidth	a. Narrow band:symbol b.Middle width:symbol	
Value Display	Display as a bar(within 0-100)	
Screen	160×160 pixel,LCD display	
Power	Lithium battery,7.4V 3000mAh,rechargeable	
Battery life	Working time after fully charged ≥35hours (Turn off backlight)	
Storage	Store 9 sets measuring value stored in 9 channels to check separately	
Operation temperature	-10℃~+50℃	
Storage temperature	-10℃~+70℃	
Size of instrument	(L×W×D) : 210×98×98mm	

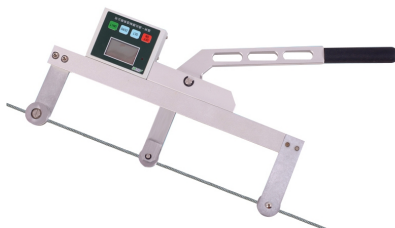
AMLS-J Economical water leak detector



Model	AMLS-J
Measuring depth	1 meter
Frequency division (Center frequency)	100HZ、200HZ、400HZ、800HZ、1KHZ、1.5KHZ 、2KHZ
Screen	128×64 pixel,LCD display
Power	Lithium battery,7.4V 2000mAh,rechargeable
Battery life	Working time after fully charged ≥ 15 hours (Turn off backlight)
Operation temperature	-10℃~+50℃
Storage	-10℃~+70℃
Size of instrument	(L×W×D) : 171×81×34mm
Weight	3.142kg

AZGH Rope Tension Meter

ALIYIQI



Description:

AZGH rope tension meter is an equipment which is testing wire rope ,wire and cable,optical fiber and cable.It is mainly suitable for high-speed rail industry,power industry,communication industry,transportation industry,construction industry,

Playground,amusement park and other occasions.It also applies to the major research institutions,testing institutions and other occasions.

Technical parameter:

Model	AZGH-A-5000G		AZGH-B-5000G		AZGH-C-5000G	
Indicate	Diameter (mm)	Full Range	Diameter (mm)	Full Range	Diameter (mm)	Full Range
Material	Cooper wire		Cooper wire		Cooper wire	
1	Φ7.5	5000	Φ10.5	5000	Φ12.5	5000
2	Φ9	5000	Φ12.5	5000	Φ14	5000
3	Φ10.5	5000	Φ14	5000	Φ16	5000
Model	AZGH-A-5000S		AZGH-B-5000S		AZGH-C-5000S	
Indicate	Diameter (mm)	Full Range	Diameter (mm)	Full Range	Diameter (mm)	Full Range
Material	Steel wire rope		Steel wire rope		Steel wire rope	
1	Φ6	5000	Φ10	5000	Φ11	5000
2	Φ8	5000	Φ11	5000	Φ13	5000
3	Φ10	5000	Φ13	5000	Φ16	5000

Technical parameter:

Load Division Value :1N

Accuracy: ±5%

Power: 7.2V Ni-MH Battery

Charger: Input AC100-240v 50-60Hz Output: DC12V 500mA

Sampling Rate: 10Hz .

ASZ ROPE TENSION TESTER

ALIYIQI
Instrument



ALIYIQI
Instrument



Product summary:

Rope Tension Testing Instrument can be applied to various occasions, such as power industry, telecommunications industry, transportation industry, glass curtain wall decoration, ropeway industry, construction industry, pleasure grounds, tunnel construction, fishing, major research institutions and teaching institutions, testing institutions and other occasions involved with the tension of ropes and steel wire ropes.

Technical parameters:

model specifications	ASZ-20	ASZ-50	ASZ-100	ASZ-200
maximum load value (KN)	20	50	100	200
Divided load value (KN)	0.01	0.01	0.1	0.1
Measuring range (mm)	$\Phi 6 \sim \Phi 18$	$\Phi 12 \sim \Phi 26$	$\Phi 20 \sim \Phi 34$	$\Phi 26 \sim \Phi 40$
output connector	Rs232 9-hole socket			
Charging time	7.2V 1.2V×6			
power	rechargeable battery charger (charging voltage 100V~240V)			
operating temperature	5℃~35℃			
transport temperature	-10℃~60℃			
relative humidity	15%~80%RH			
operation	No vibration focus and corrosive media around			
net weight	About 5.5kg			
dimensions	650×375×100mm			

DGZ-Y Elevator Rope Tension Meter



Description:

Elevator rope tension tester is mainly used in elevator wire rope tension test . To check and adjust each wire rope of elevator in the process of installation, check before acceptance and annual inspection to ensure its tension as consistent as possible, thereby prolonging the service life of the traction wheel . The tension tester can also be applied to the bridge with sling, tower wiring, overhead wire ,index wire rope and other tension test.

Product Model:

Model	DGZ-Y-3000			DGZ-Y-5000		
Number	1	2	3	1	2	3
Diameter	φ6	φ8	φ10	φ11	φ13	φ16
Range	3000N			5000N		
Min. Load Division Value	1N					
Scientific measuring range	10%~90%					
Accuracy	≒±5%					
Power	7.2V 1.2V×6 NI-H Battery					
Charger	Input : AC 100~240V			Output: DC 12V 500mA		
Weight (Kg)	1.4 kg					

HD DIGITAL PRESSUREMETER TENSION TESTER

ALIYIQI
Instrument



ALIYIQI
Instrument



Product summary:

Digital pressure meter tester is a kind of special equipment to measure wind towers, signal transmission and power transmission systems rope tension. It has characters of high precision, easy to operate, easy to carry, etc. also it has many kinds of test modes, convenient to testing. Users can also input gravity acceleration value to make the test more accurately.

Technical parameter

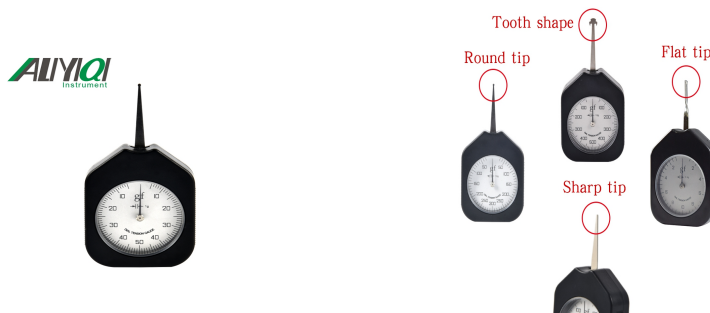
Rope Tension	Rope Diameter(mm)	A(mm)	B(mm)	C(mm)	Accuracy
1T	Φ 6~Φ 14	160	30	60	±2~6%
2T	Φ 10~Φ 18	160	30	60	
5T	Φ 16~Φ 26	180	34	68	
10T	Φ 24~Φ 36	200	40	80	
20T	Φ 24~Φ 36	240	46	90	

ATL Digital Tension Gauge



Model	ATL-1	ATL-2	ATL-3	ATL-5	ATL-10	ATL-20
Max. Load	1N	2N	3N	5N	10N	20N
	0.1Kg	0.2Kg	0.3Kg	0.5Kg	1Kg	2Kg
	0.21Lb	0.41Lb	0.62Lb	1.03Lb	2.07Lb	4.14Lb
	3.6Oz	7.2Oz	10.8Oz	18Oz	36Oz	72Oz
	100g	200g	300g	500g	1000g	2000g
Load Division	0.001N				0.01N	

ATN ATG Analog TENSION GAUGE



Product summary:

Tension meter relay connections to apply pressure, electronic switches, micro-switches, valves, spring widening pressure, dial spindle pressure measurement equipment, automatic telephone equipment connections and pressure mechanical pressure armature, tape recorders buffer pressure point of contact pressure and other precision pressure, tension tests.

Technical parameter:

Type	Max.measured value	Division value	Measuring range	G.W.(kg)
Units:N				0.25kg
ATN-0.3	0.3N	0.01N	0.06-0.3-0.06N	
ATN-0.5	0.5N	0.02N	0.1-0.5-0.1N	
ATN-1	1N	0.05N	0.2-1-0.2N	
ATN-1.5	1.5N	0.05N	0.3-1.5-0.3N	
ATN-3	3N	0.1N	0.6-3.0-0.6N	
ATN-5	5N	0.2N	1-5-1N	
Units:G				
ATG-30	30g	1g	6-30-6g	
ATG-50	50g	2g	10-50-10g	
ATG-100	100g	5g	20-100-20g	
ATG-150	150g	5g	30-150-30g	
ATG-300	300g	10g	60-300-60g	
ATG-500	500g	20g	100-500-100g	

ATSM Automatic Spring Tester



Description

ATSM Automatic spring tester is a new type spring testing machine that application of advanced electronic technology combined with high efficient precision mechanical transmission, this series of automatic spring tension and compression testing machine based on international JB / T7796-2005 《spring tension and compression testing machine technical conditions》, Configuration of high-precision sensor which can be accurately loaded and positioned. Mainly applied to spring, rubber, reed and other elastic devices in a certain length of work under tension, compression force, stiffness, fatigue and other tests. Widely used in spring manufacturing companies .

Technical Parameters

Model	10	20	50	100	200	500
Max. Load	10N	20N	50N	100N	200N	500N
Min. Resolution	0.0001 N	0.001N	0.001N	0.001N	0.01N	0.01N
Unit	N、Kgf、lbf					
Accuracy	±0.5%					
Length (movement) accuracy	0.01mm					
Max. Stroke	170mm					
Speed Range	1-500mm/min					
Standard pressure plate diameter	Φ 60mm					
Manual Button move at once	1mm, 0.1mm, 0.01mm					
Test Selection	Compression , Extension					
Spring Test Selection	1,set length and test load 2,set load and test length 3,set deformation and test load 4,set load and test deformation					
Dimension	450mm*380mm*550mm					
Weight	About 60kg					
Power	110-240V 0.5A					

ATH Spring Tester



ATH-10~30N



ATH-50~500N



ATH-1000~5000N

Description:

As a special-purpose instrument, this testing machine is used to test amount of deformation and characteristic of load relation of extension and compression springs. It can be applied to the testing of working load of extension and compression springs under certain working length. Advanced and highly integrated chip microprocessor is adopted by this machine, which also has liquid crystal display (English) and metal enclosure. The interference-killing feature of the system is thus greatly improved.

Technical parameters:

[illegible]

ANH Digital Torsional Spring Tester



Function:

ANH series digital torsion spring tester is a kind of intelligent multifunctional measuring instrument used for testing and inspection of torsion springs. With simple operation, high accuracy, easy to carry, complete functions, widely used in all kinds of electric, light industry, machinery manufacturing, research institutions, etc.

Technical parameters:

1. **Angle Resolution:** 0.1°
2. **Torque dish diameter:** 100mm
3. **The tested spring height:** $<80\text{mm}$
4. **Torsional horn maximum read values:** 9999.9°

Parameters Types	Biggest test torque	Measurement range	The minimum read values (N · m)
ANH-500A	500 mN · m	5~500 (mN · m)	0.01 mN · m
ANH-1000A	1000 mN · m	10~1000 (mN · m)	0.1 mN · m
ANH-2000A	2000 mN · m	20~2000 (mN · m)	0.1 mN · m
ANH-3000A	3000 mN · m	30~3000 (mN · m)	0.1 mN · m
ANH-5000A	5000 mN · m	50~5000 (mN · m)	0.1 mN · m
ANH-1	1 N · m	0.01~1 (N · m)	0.0001 N · m
ANH-2	2 N · m	0.02~2 (N · m)	0.0001 N · m
ANH-3	3 N · m	0.03~3 (N · m)	0.0001 N · m
ANH-5	5 N · m	0.05~5 (N · m)	0.0001 N · m
ANH-10	10 N · m	0.1~10 (N · m)	0.001 N · m
ANH-20	20 N · m	0.2~20 (N · m)	0.001 N · m

ADT Digital Horizontal Torsion Spring Tester



Introduction:

ADT horizontal torsion spring testing machine is an intellectualization and multiple function measuring instrument which is special designed for testing various kinds of torsion spring. It can be used in torsion testing system of various shapes of torsion spring, volute spring and other elastic torsion element. Has the advantages of simple operation, high precision, whole function, portable and so on. Widely use in various kinds of electrical, light industry, machinery manufacturing, scientific research institution and other industries.

Technical parameters:

meter Model \ para	Max torque	Measuring range	Min reading (N . mm)
ADT-500A	500 mN . m	5~500 (mN . m)	0.01 mN . m
ADT-1000A	1000 mN . m	10~1000 (mN . m)	0.1 mN . m
ADT-2000A	2000 mN . m	20~2000 (mN . m)	0.1 mN . m
ADT-5000A	5000 mN . m	50~5000 (mN . m)	0.1 mN . m
ADT-1	1 N . m	0.01~1 (N . m)	0.0001 N . m
ADT-2	2 N . m	0.02~2 (N . m)	0.0001 N . m
ADT-5	5 N . m	0.05~5 (N . m)	0.0001 N . m
ADT-10	10 N . m	0.1~10 (N . m)	0.001 N . m
ADT-20	20 N . m	0.2~20 (N . m)	0.001 N . m
ADT-30	30 N . m	0.3~30 (N . m)	0.001 N . m
ADT-50	50 N . m	0.5~50 (N . m)	0.001 N . m

- 2、Angular resolution: 0.1°
- 3、Angel range of measurement: 0~±9999.9°
- 4、Specimen tactical diameter: $\phi 100\text{mm}$
- 5、The length of specimen: 150mm
- 6、Loading mode: manual
- 7、Precision: $\pm 1\%$
- 8、Power pack: AC100-240V 50-60Hz
- 9、Outline dimension: 710×320×290(mm)
- 10、Weight: about 37.5Kg

AMF DIGITAL FORCE GAUGE



(ALIYIQI BRAND)



(NO LOGO)

Model	2	3	5	10	20	30	50	100	200	300	500
Maximum load value	2N	3N	5N	10N	20N	30N	50N	100N	200N	300N	500N
	0.2kg	0.3kg	0.5kg	1kg	2kg	3kg	5kg	10kg	20kg	30kg	50kg
	0.45Lb	0.65Lb	1.1Lb	2.2Lb	4.5Lb	6.5Lb	11Lb	22Lb	45Lb	65Lb	110Lb
	7.2Oz	10.8Oz	18Oz	36Oz	72Oz	108Oz	180Oz	360Oz	720Oz	1080Oz	1800Oz
Load division value	0.001N			0.01N				0.1N			
	0.001kg			0.001kg				0.01kg			
	0.001Lb			0.001Lb				0.01Lb			
	0.01Oz			0.1Oz				1Oz			
Sensor structure	Inner sensor										
Accuracy	$\pm 1\%$										
Power	2 AAA batteries 1.5V										
Working temperature	$5^{\circ}\text{C} \sim 35^{\circ}\text{C}$										
Transport temperature	$-10^{\circ}\text{C} \sim 60^{\circ}\text{C}$										
Relative humidity	$15\% \sim 80\%\text{RH}$										
Working conditions	No vibration source around and no corrosive environment.										
Dimensions	124*60*31(mm)										
Net weight	$\sim 0.4\text{Kg}$										

HF DIGITAL FORCE GAUGE



Column type sensor(200K-2000K)

Technical specification :

[illegible]

Model	1000	2000	3000	5000	10k	20k	30k	50k	100k	200k	300k	500k	1000k	2000k
Peak load value	1000 N	2000 N	3000 N	5000 N	10K N	20K N	30KN	50K N	100 KN	200K N	300K N	500K N	1000 KN	2000 KN
	100kg	200kg	300kg	500kg	1Kkg	2Kkg	3Kkg	5Kkg	10Kkg	20Kkg	30Kkg	50Kkg	100K kg	200Kkg
	220Lb	450Lb	650Lb	1100Lb	2.2KLb	4.5KLb	6.5KLb	11KLb	22KLb	45KLb	65KLb	110KLb	220KLb	450KLb
load division value	0.1N	1N			0.001KN	0.01KN				0.1KN				1KN
	0.01kg	0.1Kg			0.001Kg	0.001KKg				0.01KKg				0.1KKg
	0.01Lb	0.1Lb			0.001KLb	0.001KLb				0.01KLb				0.1KLb
Sensor structure	Inner/External Sensor	External sensor												
Accuracy	±1%													
Data interface	RS 232 nine-hole socket													
Power	7.2V 1.2V×6 NiMH batteries													
Charging time	4~6 hours													
The battery of continuous use of time	About 15 hours													
Battery Life	≥300 times													
Charger	Input: AC 100-240V 50HZ Output: DC 12V 500mA													
Working temperature	5℃～35℃													
Transport temperature	-10℃～60℃													
Relative humidity	15%～80%RH													
Working conditions	No hypocenter and corrosive medium													

Package

ALYIYI Instrument

Model	SF -2	SF-3	SF -5	SF-1 0	SF-2 0	SF-30	SF-5 0	SF-10 0	SF-20 0	SF-3 00	SF-5 00
The max. Load value	2N	3N	5N	10N	20N	30N	50N	100N	200N	300N	500N
	0.2kg	0.3kg	0.5kg	1kg	2kg	3kg	5kg	10kg	20kg	30kg	50kg
	0.45 Lb	0.65 Lb	1.1L b	2.2Lb	4.5L b	6.5L b	11Lb	22Lb	45Lb	65Lb	110L b
Load Value	0.001N			0.01N			0.1N				
	0.001KG			0.001KG			0.01KG				
	0.001Lb			0.001Lb			0.01Lb				
The sensor	Sensor inside										
Precision	±0.5%										
Power	3.7V lithium battery										
Charging time	4~6 hours										
Continuous usage time of battery	About 15 hours										
Battery life	≥ 300 times										
Charger	Input: AC100- 240V 50-60Hz Output: DC 5V 1000mA										
Working temperature	5 ℃ ~35 ℃										
Transportatio n temperature	-10 ℃~60℃										
Relative humidity	15%~80%RH										
Work environment	No focus ,Non-corrosive in surroundings										

AEL Tensile Testing Machine



Product Description:

AEL Single-column Vertical Machine is force load test platform specially matched for HF and NK series force measurement gauge. The product is double vertical rod structure, featuring good stability, wide applicable scope and convenience, as well as step-less speed regulation, manual (point) and automatic control switching functions. Applicable for tests of force load, Insertion and withdrawal, destruction in such industries as rubber and plastic, light industry-textile, constructional door and window, composite materials, electric wire and cable, parts and accessories for automobile, power machinery, scientific research institutes, etc.

Technical parameters:

Model	AEL-200-500N	AEL-400-500N	AEL-700-500N	AEL-200-1000N	AEL-400-1000N	AEL-700-1000N
Max load	500N			1000N		
Road journey	200mm	400mm	700mm	200mm	400mm	700mm
speed	25-280mm/min					
voltage	AC100-240V					
outline dimension (mm)	280×340×780	280×340×980	280×340×1270	280×340×780	280×340×980	280×340×1270
Net weight	38kg	40kg	42kg	38kg	40kg	42kg

AEL-A Motorized Test Stand



Main usage and scope of application

The AEL-A motorized test stand is an integrated test machine designed to test tensile or compression. It replaces the traditional electric (manual) test machine + digital display test mode, which enhances the accuracy of the test and the convenience of operation. It is suitable for testing such as push-pull force, insertion force and break force test in rubber and plastics, light industrial textiles, building doors and windows, composite materials, wire and cable, auto parts, power machinery, scientific research institutions, etc.

Product model specifications

Model	AEL-A-2	AEL-A-3	AEL-A-5	AEL-A-10	AEL-A-20	AEL-A-30	AEL-A-50	AEL-A-100	AEL-A-200	AEL-A-300	AEL-A-500	AEL-A-1000
Maximum Load	2N	3N	5N	10N	20N	30N	50N	100N	200N	300N	500N	1000N
	0.2kg	0.3kg	0.5kg	1kg	2kg	3kg	5kg	10kg	20kg	30kg	50kg	100kg
	0.45Lb	0.65Lb	1.1Lb	2.2Lb	4.5Lb	6.5Lb	11Lb	22Lb	45Lb	65Lb	110Lb	220Lb
Load division value	0.001N				0.01N				0.1N			
	0.0001kg				0.001kg				0.01kg			
	0.0001Lb				0.001Lb				0.01Lb			
Accuracy	±0.5%											±1%
Effective stroke	400mm											
Test speed	1-300mm/min											
Working voltage	AC:110V or AC:220V											
Dimension	290mm*500mm*900mm											
Net weight	37kg											

AEV Electric DOUBLE COLUMN VERTICAL TEST STAND



Product Description:

AEV electric vertical machine is a push -pull load test stand specially equipped for HF series and NK series force gauges. This product adopts dual vertical pole structure, featured by good stability, wide application and easy to use, etc., with the functions of step-less speed regulation, manual (crawl) and automatic switching. This product is appropriate for the push-pull load, plug power and other destructive tests in the industries of rubber, plastics, light textile, building doors and windows, composite materials, wire and cable, auto parts, power machinery and research institutions, etc.

Technical parameters:

Model	5000N	5000N(Heightening type)	10000N	20000N	30000N
Max load	5000N		10000N	20000N	30000N
Effective stroke	220mm（Can be custom made from 220mm to 1000mm）				
Test speed	60-220mm/min		50~180mm/min		
Working voltage	110-240V				
Dimensions(mm)	400*250*1050	400*250*1300	430*250*1160		
Net weight	56kg	60kg	65kg		

AEH Electric Horizontal Test Stand



Product summary:

AEH electric horizontal test stand is designed for HF series and NK series force gauge of push-pull load test. This product adopts double guide bar structure, it has good stability, wide suitable scope, convenient use, and has advantages of step-less speed adjustment, manual (jog), automatic control switch function. Applicable to electronic appliances, electric wire and cable, hardware machinery, electromagnetic machinery, auto parts, and machinery, chemical industry, building doors and windows, adhesive plastic woven, spring coil manufacturing, medical equipment, fire equipment, printing and

packaging, shaver, gear aviation, zipper buttons, textile and clothing, coal, furniture, elevator, lighter and ignition devices, lock, pens industry , electric power industries and scientific research institutions, schools, etc.

Specifications:

Maximum load	500N (1000N can be custom made)	Working voltage	AC100-240V
Effective stroke	150 mm (280mmcan be custom made)	Outline dimension	470×200×255 (mm)
Testing speed	80-500 mm/min	Net weight	35 kg

ASC Sides Shake Test Stand



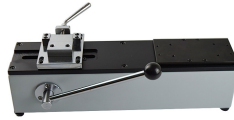
Product summary:

Model ASC manually-operated vertical side-shaking test stand is specially outfitted with HF series and NK Series thrust meters and pull tension gauge, which can be combined into test machine stands for different applications, being applied to a variety of tests of plug & pull force, pressing force, destruction testing, etc. and other tests. It not only can display the force value, but also can at the same time be installed digital measuring scale, displaying the displacement, and performing the contrast tests of different parts under the same displacement.

Technical parameters:

Model	ASC-500	ASC-1000
Max load	500N	1000N
Effective stroke	180mm	
Outline dimension	260×360×500 or 260×360×700 (heightening)	
Net weight	About 18KG	About 19KG

AMH Manual Horizontal Test Stand



Product summary:

AMH manual horizontal test stand adapt to domestic and imported test NLB NK, ALB etc. series pointer type push pull force gauge and for pressure load, and insertion force test, etc. of HF series digital force gauge.

Technical parameters:

- Effective trip: 50mm
- Maximum load: 500N
- Dimensions: 450* 260* 160 mm
- Net weight: about 10.5kg

ASL SCREW TEST STAND



Product summary:

ASL Manual Vertical (horizontal) dual test stand is specially equipped for NK and HF series of mechanical force gauge, which can be combined to a test machine for different purposes and carry out accurate plug force, pressure force and other destructive tests. While displaying the force values, it can be equipped with the gauge to display its displacement and carry out comparison test on different parts under the same displacement.

Technical parameters:

- For vertical-horizontal dual use
- Maximum load: 500N
- Effective stroke: 140 mm
- Dimensions: 200×160×540 mm
- Net weight: about 15 kg

ABL PEEL-OFF FORCE TEST STAND



Product summary:

ABL Peel-off Force Test Stand is specially designed for NK, HF series Push pull equipment, can be combined into the test machine with different uses. Specially used in PC board on foil circuit adhesion force or Tin foil, aluminum foil, tape etc. Hit the object surface firmness. In view of vertical dissect the test sample. To measure the actual strength.

Technical parameters:

- Manual operation, ladder type screw transmission, simple and stable operation.
- This frame can be installed in table face, to make the test stand more stable.
- Effective trip: 100mm
- Max. Load: 500N
- Dimensions: 350×210×450 mm
- Net weight: 18.5kg

AJJ KEYSTROKE FORCE GAUGE TEST STAND



Product summary:

Keystroke force gauge test stand is specially equipped for force gauge, which is used to the pressure load test of keys and buttons, featured by high precision, easy operation and quick reset, etc.. This machine is easy to use, can be placed on various working stand for using.

Technical parameters:

- Dimensions: 200×150×260mm
- Effective stroke: 25mm
- Net weight: 7.7kg

ALX SCREW TEST STAND

ALIYIQI



ALX-J

ALIYIQI



ALX-B(with steel ruler)

ALIYIQI



ALX-S(with scale)

Product summary:

ALX Screw test stand are fit to the domestic and imported NK, NLB, ALB series point type of mechanical force gauge and HF series of digital mechanical force gauge, which are subject to the pull load and plug destructive force test, also can be installed with steel gauge or digital gauge. Users can clearly observe the displacement when testing.

Technical parameters:

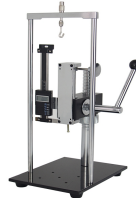
- Maximum load:500N
- Effective stroke:150 mm
- Dimensions:235×152×490 mm
- Effective area of the test area:105×100 mm
- Net weight:about 9 kg

AST MANUAL FORCE GAUGE TEST STAND

ALIYIQI



AST-J



AST-S(with scale)

Product summary:

The AST Manual Test Stand can cooperate with imported and domestic various types of tension and compression force gauge (push pull force gauge) for pull pressure load, dial, strength tests slide,destructive test and so on.

Technical parameters:

- Maximum load:500N
- Effective stroke:80 mm
- Dimensions:240×255×505mm
- Effective area of the test area:105×100 mm
- Max. can be reached 105×150mm
- Net weight: about 12kg

ALR HYDRAULIC TEST STAND



Product summary:

ALR Hydraulic model test stand is designed for HF series push pull force gauge operation, manual operation. Using large hydraulic jacks to realize big load force test, Simple and stable operation, it can be combined with different fixtures in various combinations of different purposes compressive load test.

Technical parameters:

Max. load	5k	5T	10T	20T	50T
Compress chamber	200mm	220mm	200mm	145mm	290mm
Stretching chamber	150mm	150mm	230mm	270mm	160mm
Effective stroke	90mm	125mm	125mm	145mm	160mm
Dimensions	190×190×840mm	248×248×1050mm	310×310×1280mm	310×310×1350mm	370×370×1510mm
Net weight	30kg	42kg	92kg	102kg	240kg

ABQ BUTTON SNAP PULL TESTER



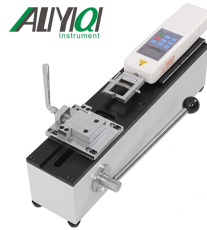
Product summary:

The button tester is configurable for NK, HF Push Pull Gauge and special jig. Dedicated to measure the buttons' clip force or the collapsing force of detachment from clothing. Detecting the fixed strength of buttons is very important standard. Especially in infants and children's clothing design and manufacturing is the most important. It needs strength instruments to note the measurement of the force in the fixed decorative button.

Technical parameters:

- Maximum load:300N
- Effective stroke:180 mm
- Dimensions:260×360×700mm
- Net weight: about 20kg

ADL TERMINAL PULL FORCE TESTER



Introduction:

ADL Terminal pull force tester is a kind of testing equipment to wiring harness and electronic industry, specifically used to test all kinds of wire terminals pulling-out force. The instrument can combine NK, HF force gauge and special fixture in testing. This instrument has characteristics of compact device, accurately controlling, high testing accuracy, convenient specimen clamping, simple operation, etc. It is the ideal equipment for wiring harness factory to ensure product quality.

Technical parameters:

- Maximum load: 500N
- Effective stroke: 50 mm
- Dimensions: 450×260×160mm
- Net weight: about 10.5kg

Pen-type portable Leeb hardness tester



(without standard block)



(with standard block)

LX-A Shore A Hardness Tester



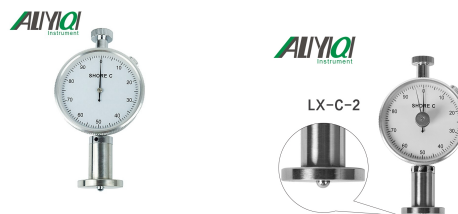
overview

LX-A hardness tester is widely applied in the low and medium hardness plastic, all kinds of rubber, multidimensional fat, leather, wax hardness test etc. The product refers to ISO868 and the ISO7619 international standard production, conforms to GB/T531, JB6148 and the JJG304 standard.

Technical parameters

- Measuring range: 0-100HA
- Recommended measurement range: 10~90HA
- Outline dimension: 115×60×25mm
- 4、 Pressure Needle Range:2.5mm
- 5、 End pressure of Pressure Head:Φ0.79mm
- 6、 Net weight : ~0.16kg、 ~0.14kg、 ~0.13kg

LX-C Shore C Hardness Tester



overview

LX-C hardness tester is used in measuring the hardness of oak model micro porous material which includes vesicant when the compression ratio is 50%, the stress above 0.5kg/cm². It also can be used in other similar hardness materials.

Technical parameters

- Measuring range: 0-100HC
- Recommended measurement range:
- Outline dimension: 115×60×25mm
- Pressure Needle Range:2.5mm
- End pressure of Pressure Head
- Net weight : ~0.16kg, ~0.14kg



LX-D Shore D Hardness Tester



Overview

LX-D hardness tester is suitable for hardness test of high degree of hardness material, such as common hard rubber, hardened resin, acryl, Plexiglas, thermos plastic rubber, printing plate, fibre. The product conforms to HG/T2489 and other related standard request.

Technical parameters

- Measuring range: 0-100HD
- Recommended measurement range: 20~90HD
- Outline dimension: 115×60×25mm
- Pressure Needle Range: 2.5mm
- End pressure of Pressure Head: SR0.1mm
- Net weight : ~0.16kg, ~0.14kg, ~0.14kg

LAC-YJ, LD-YJ Hardness Test Stand



LAC-YJ



LD-YJ

Product summary:

The testing principle of hardness tester is compact, more reasonable that makes the stability and the accuracy of the test, it has a further improvement. And the use of high rigidity metal platform instead of the traditional glass platform, avoid the shortcomings of fragile glass platform. Especially in the testing of hardness test D, the users do not need to equipped with special hardness blocks, make the testing more economic and convenient .

LAC-YJ type is adapted to LX-A, LX-C hardness tester of our company's, LD -YJ is adapted to our LX-D type hardness tester.

LX-F Sponge Hardness Tester



Product summary:

LX-F type sponge durometer is suitable for the determination of soft foam, polyurethane foam rubber products' hardness. And it will be different with the other hardness tester in the aspects of using. When using, the presser foot directly contact to the sample, and see its own weight as force measurement load.

Character

- 1: Scope of pressure needle route: 0 ~ 2.5mm
- 2: The scale value: 0-100 degrees.
- 3: The force of pressure needle end: 550mN~4300mN (56~438.5g).
- 4: Net weight : about 505g

Digital refractometer



(AMSZ-J)

Digital Salinity meter



(AMSZ-Y)